



**“VERNOST”**

**NOBELOVA**

Head of the Studio: Doc. Ing.arch. Henrich  
Pifko, PhD.

Student :Madhu Sain

Year: 2020/2021



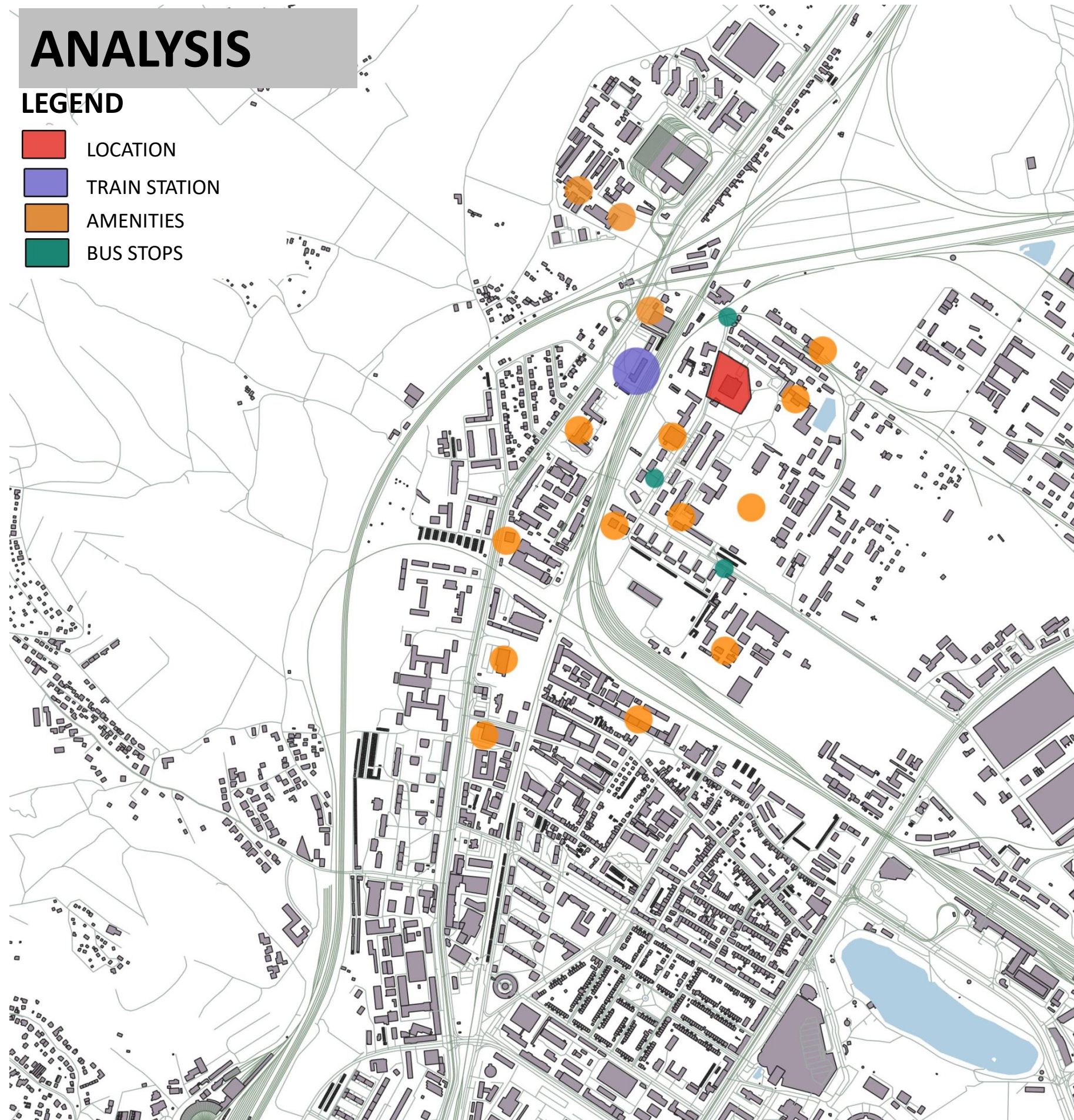
**SLOVAK UNIVERSITY OF TECHNOLOGY IN BRATISLAVA**  
**FACULTY OF ARCHITECTURE AND DESIGN**



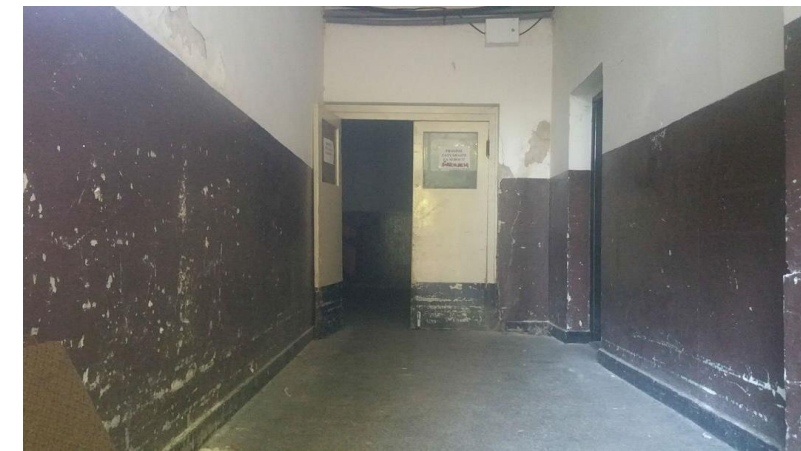
# ANALYSIS

## LEGEND

- LOCATION
- TRAIN STATION
- AMENITIES
- BUS STOPS

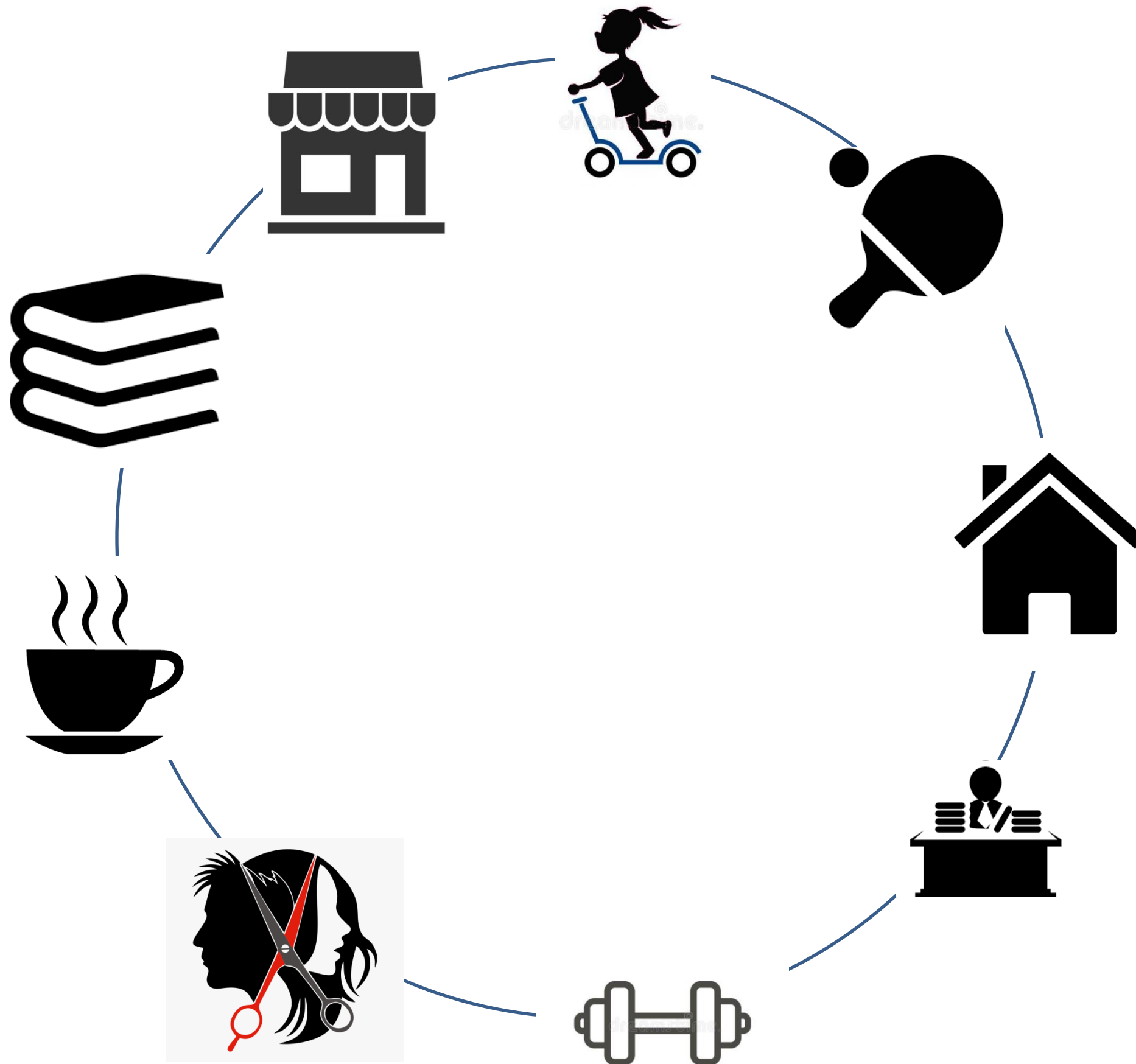


## CONDITIONS OF THE BUILDING





# FUNCTIONAL USE OF THE BUILDING



RETAINING SOME FUNCTIONS THAT ARE  
ALREADY EXISTING IN THE BUILDING .

☐ LIBRARY

☐ CLUBS FOR ELDERLY

NEW FUNCTIONS ARE PROVIDED  
ACCORDING TO THE AMENITIES WHICH  
ARE UNAVAILABLE IN THE NEARBY AREA.

☐ RETAIL

☐ SALON

☐ CLUBS FOR KIDS

☐ FITNESS CENTER

☐ INDDOR GAMES

☐ SMALL METTING ROOM

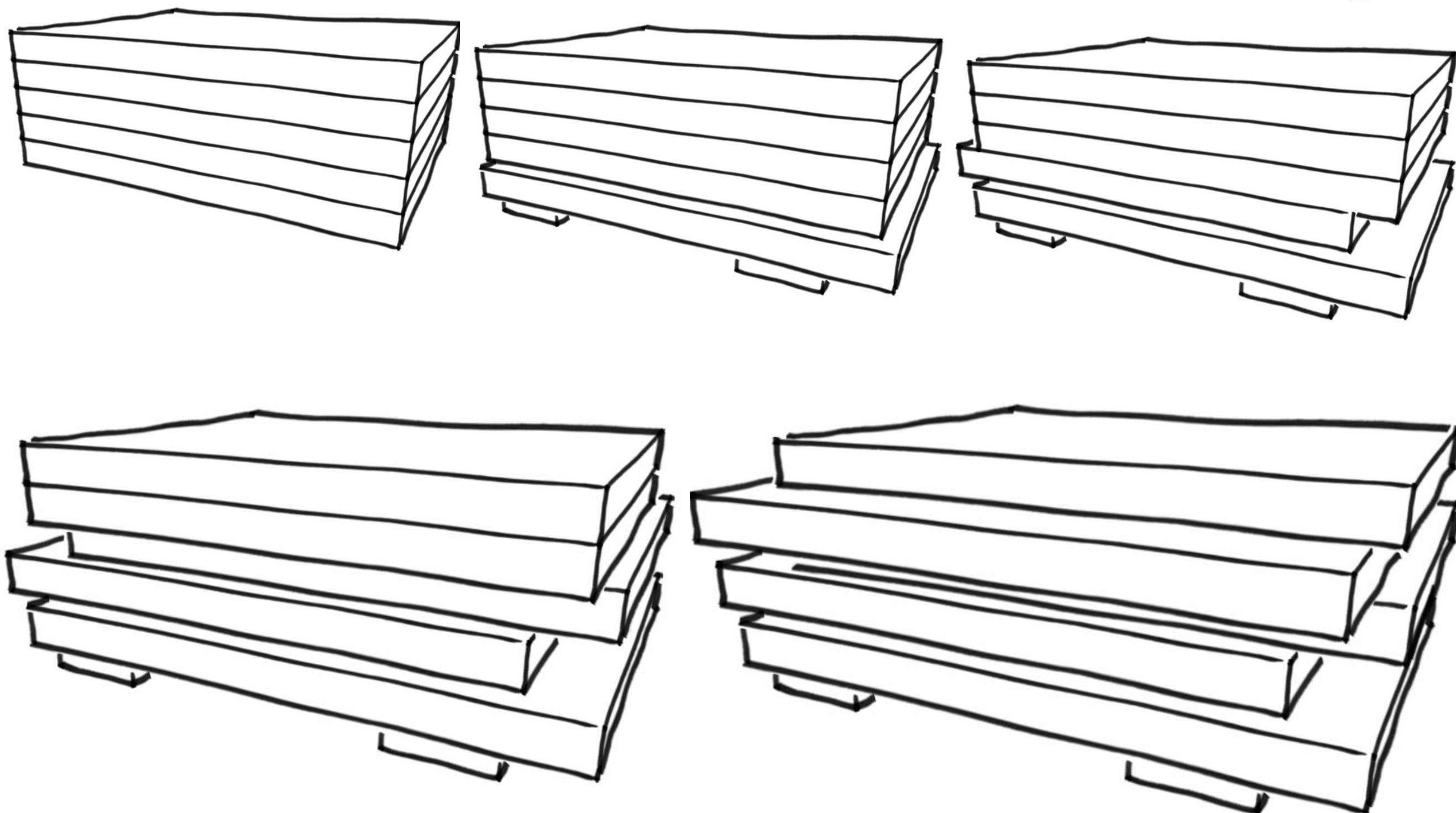
☐ OFFICES

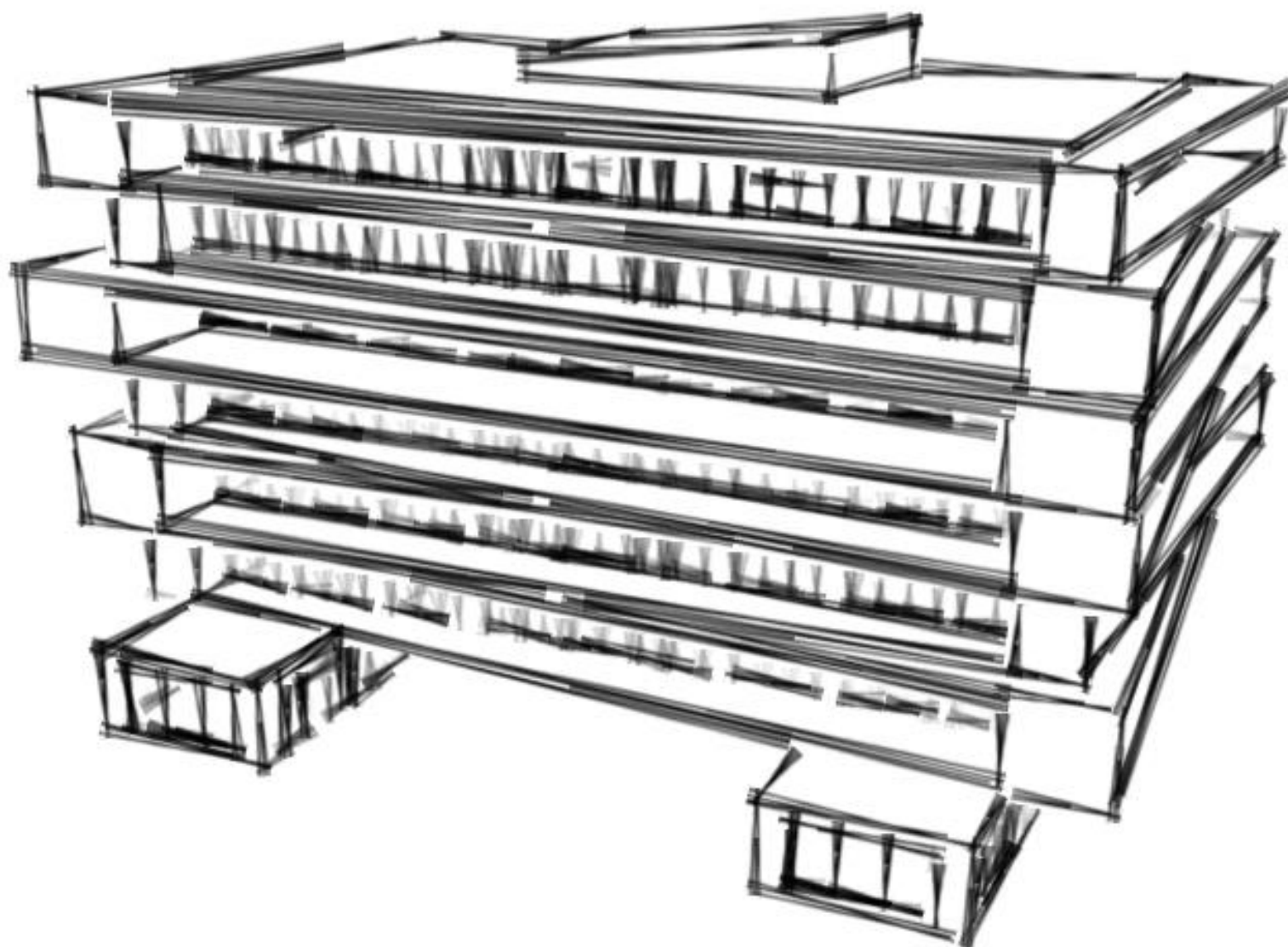
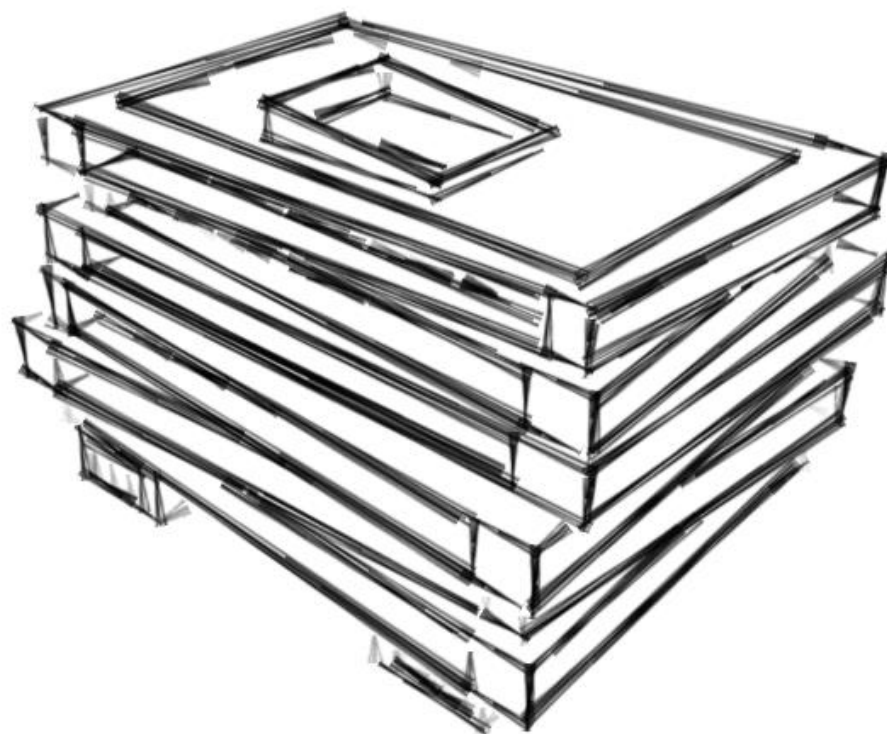
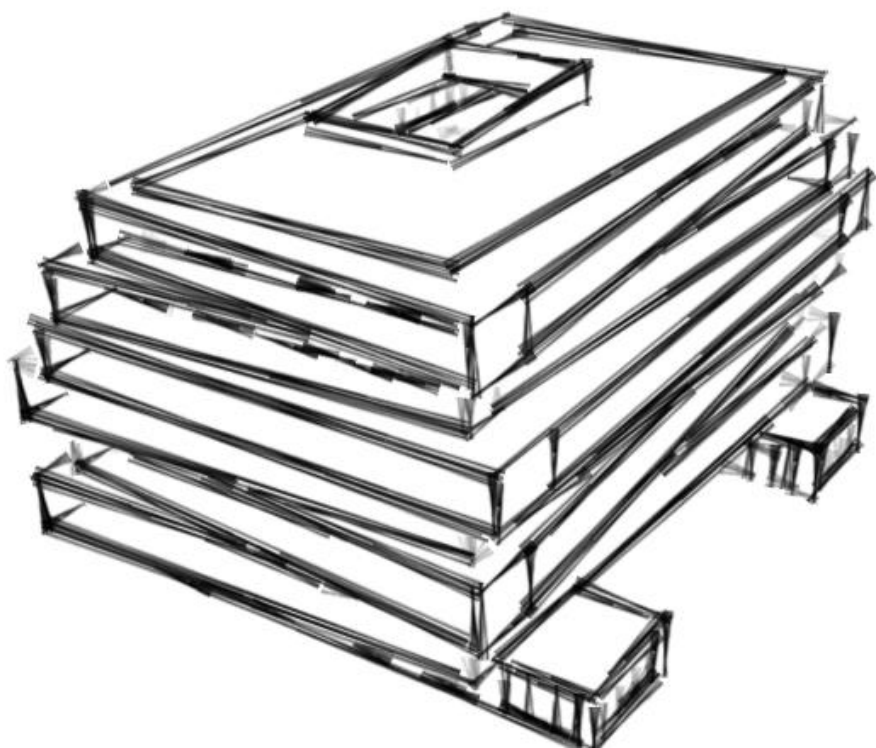
☐ TEMPORARY APARTMENTS

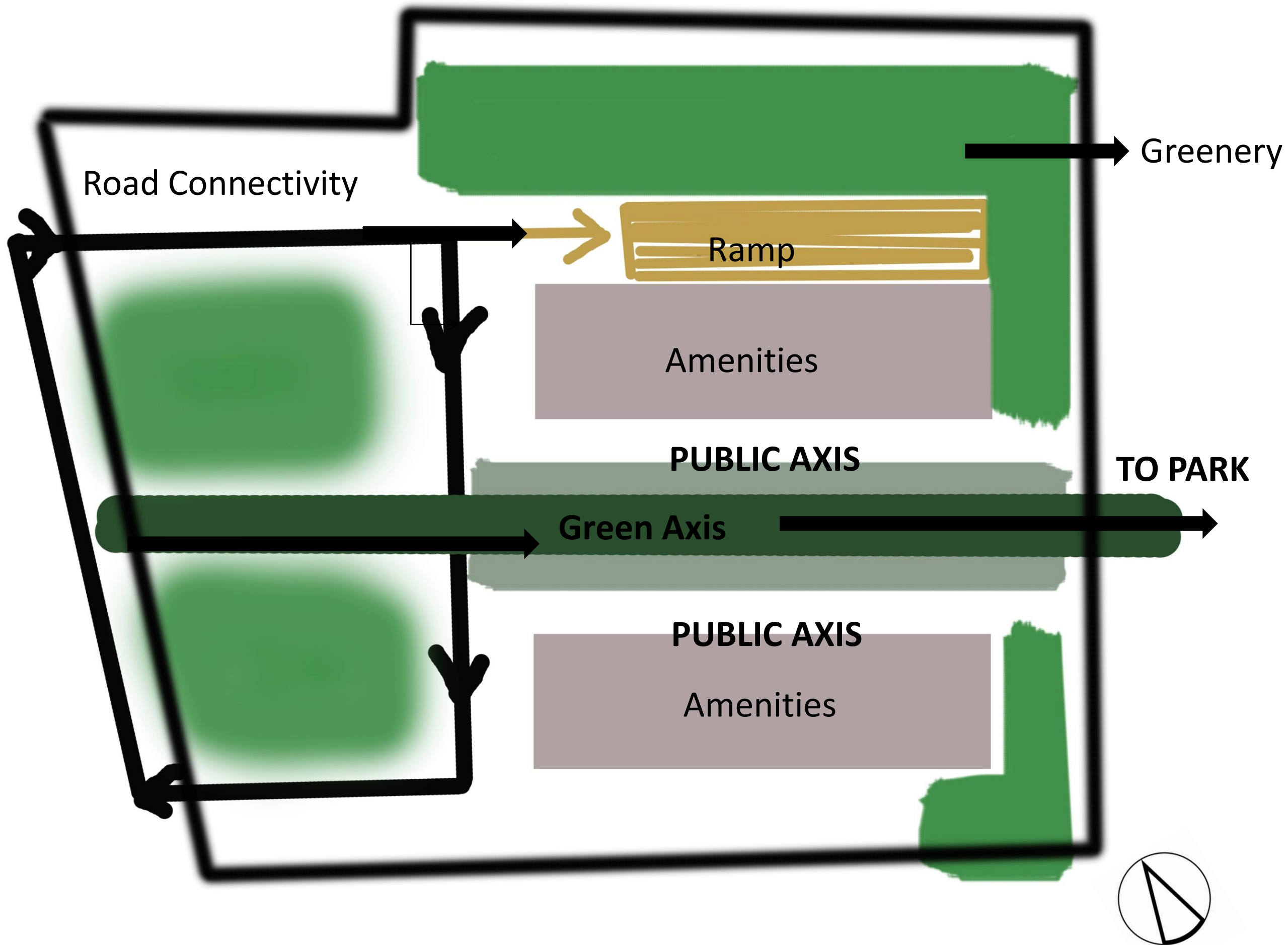
☐ WORKSPACE

# CONCEPT

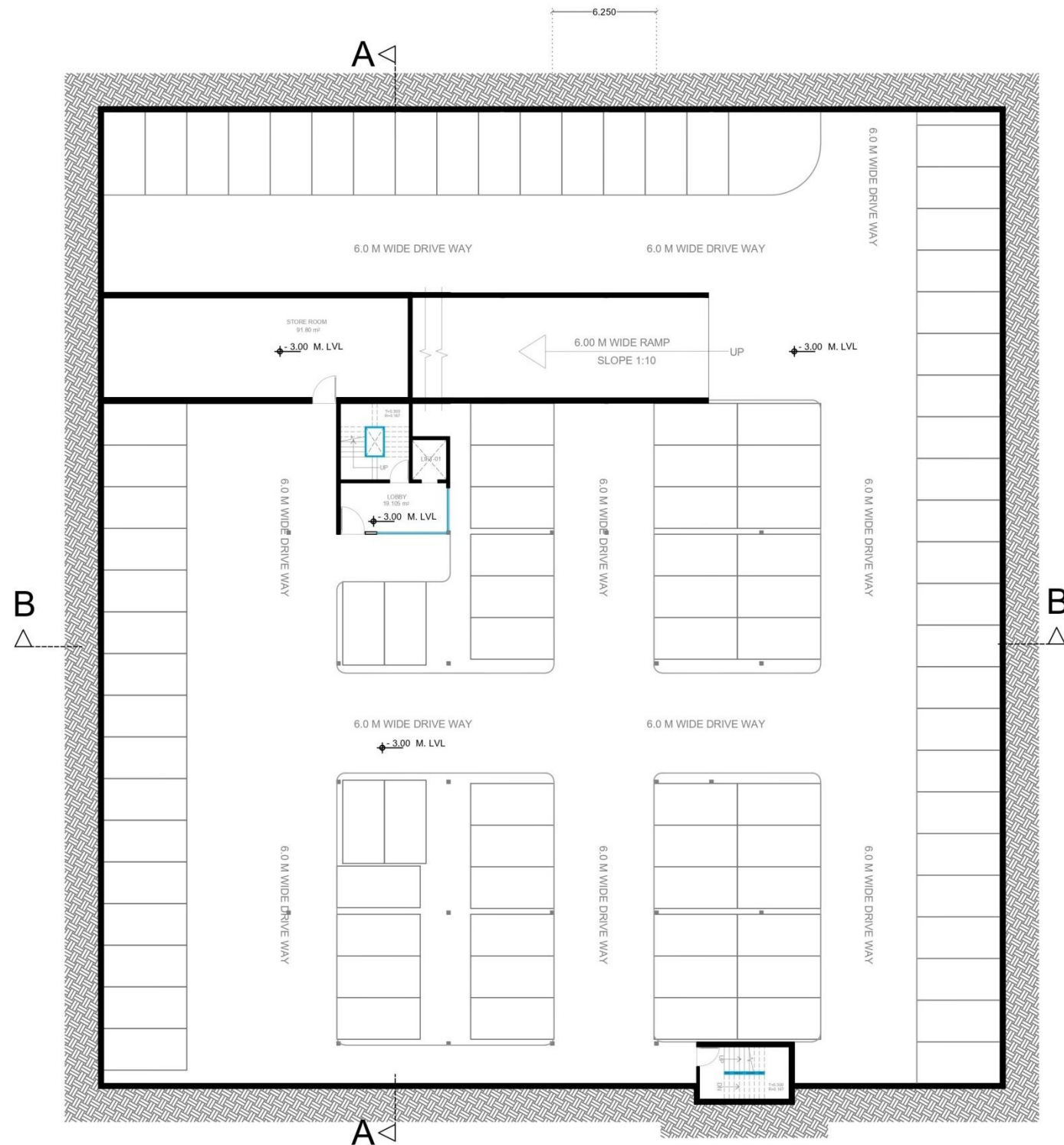
BOOKS ARE KEPT UPON EACH OTHER ON A WOODEN LOG IN A DISORGANIZED MANNER.







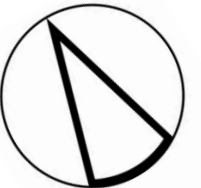




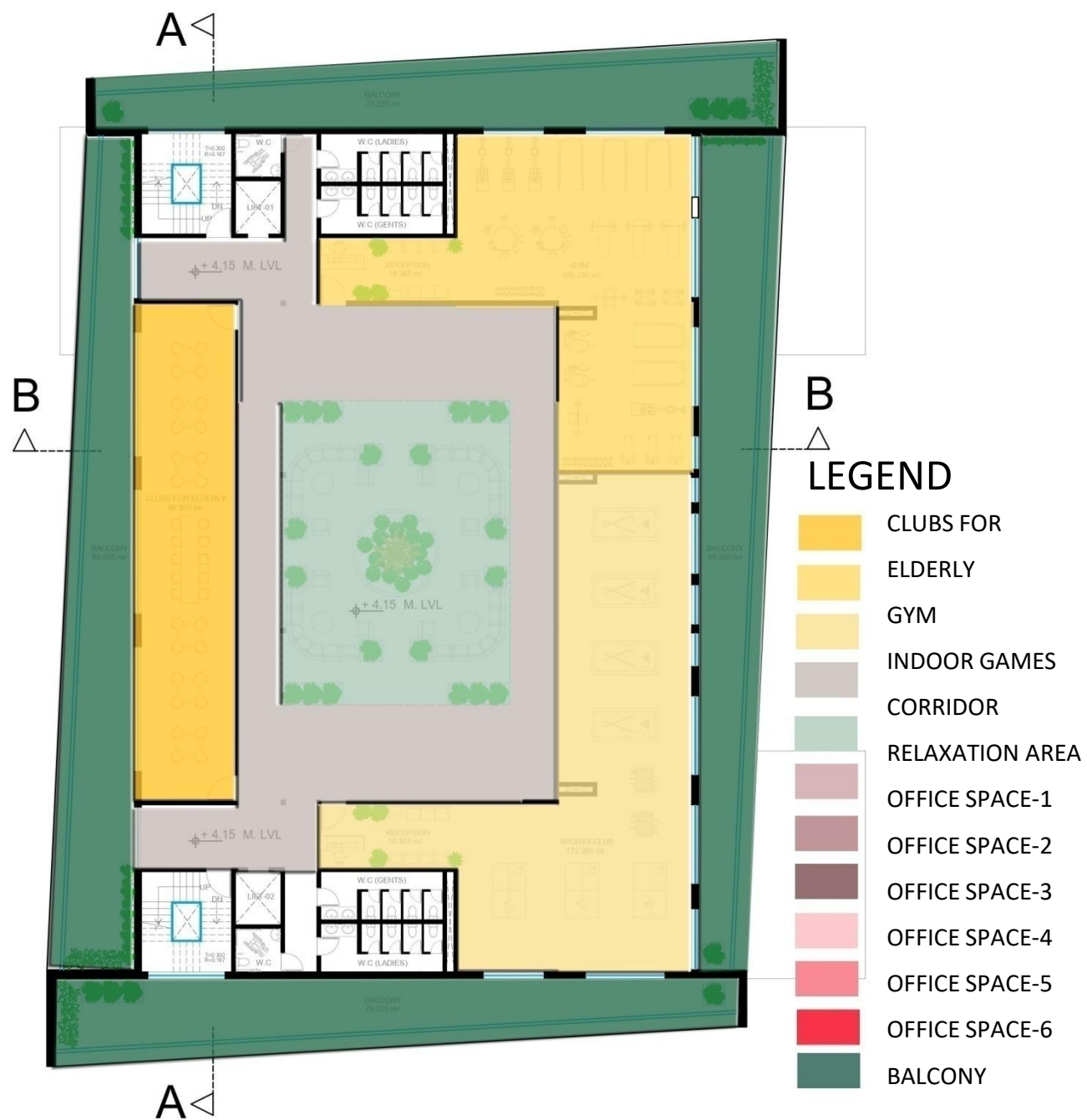
BASEEMENT FLOOR PLAN







# GROUND FLOOR PLAN



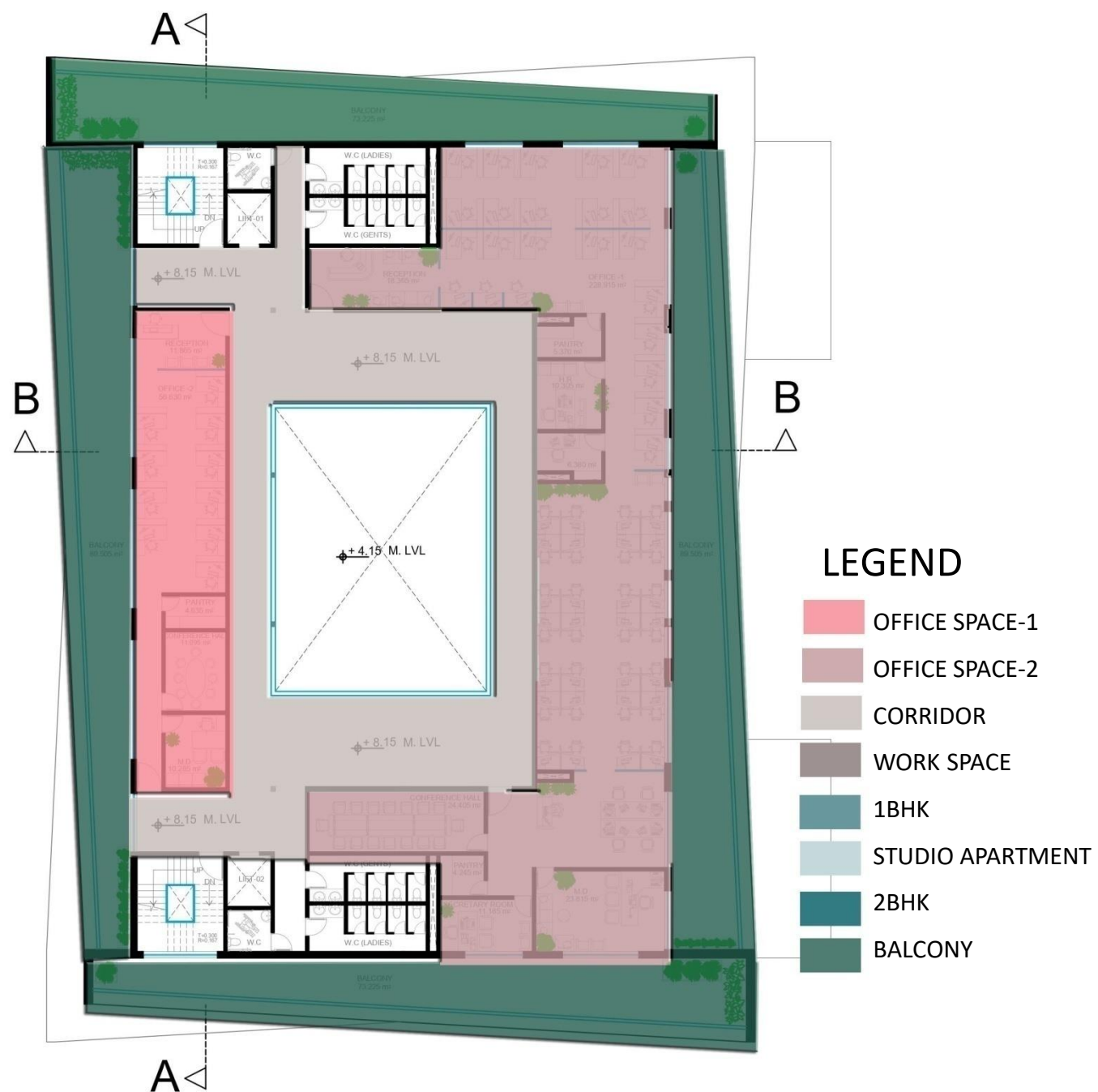
FIRST FLOOR PLAN



SECOND FLOOR PLAN









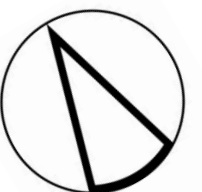
FOURTH FLOOR PLAN

### LEGEND

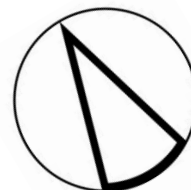
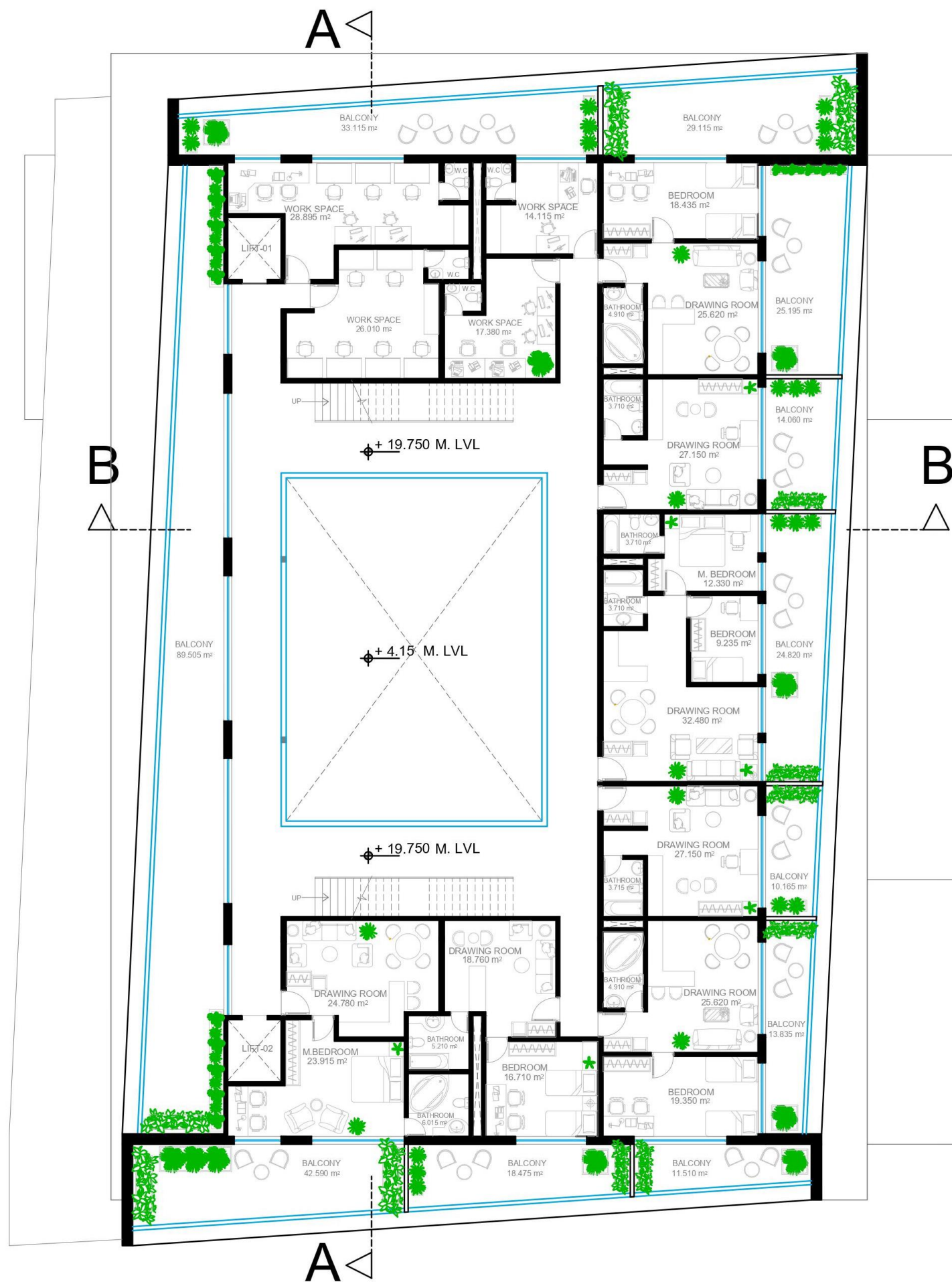
- CORRIDOR
- WORK SPACE
- 1BHK
- STUDIO APARTMENT
- 2BHK
- BALCONY

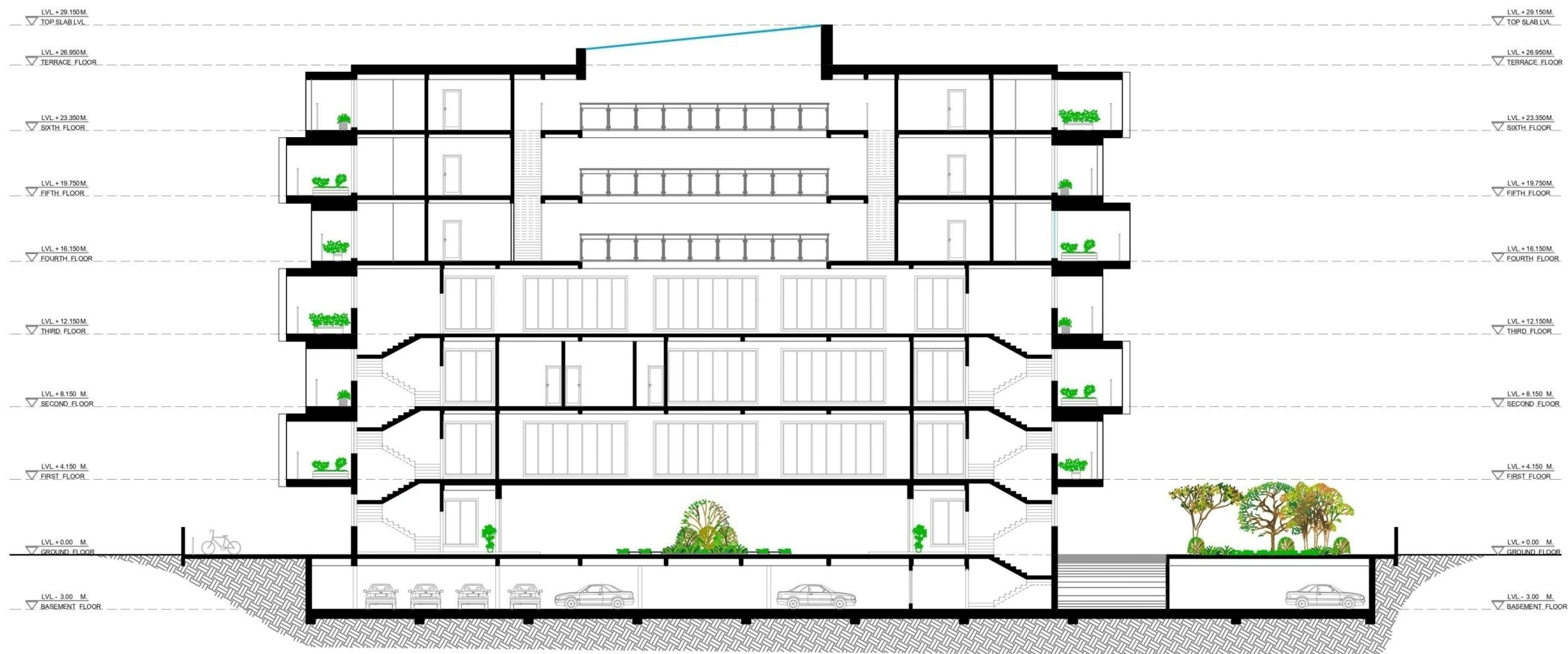


FIFTH FLOOR PLAN







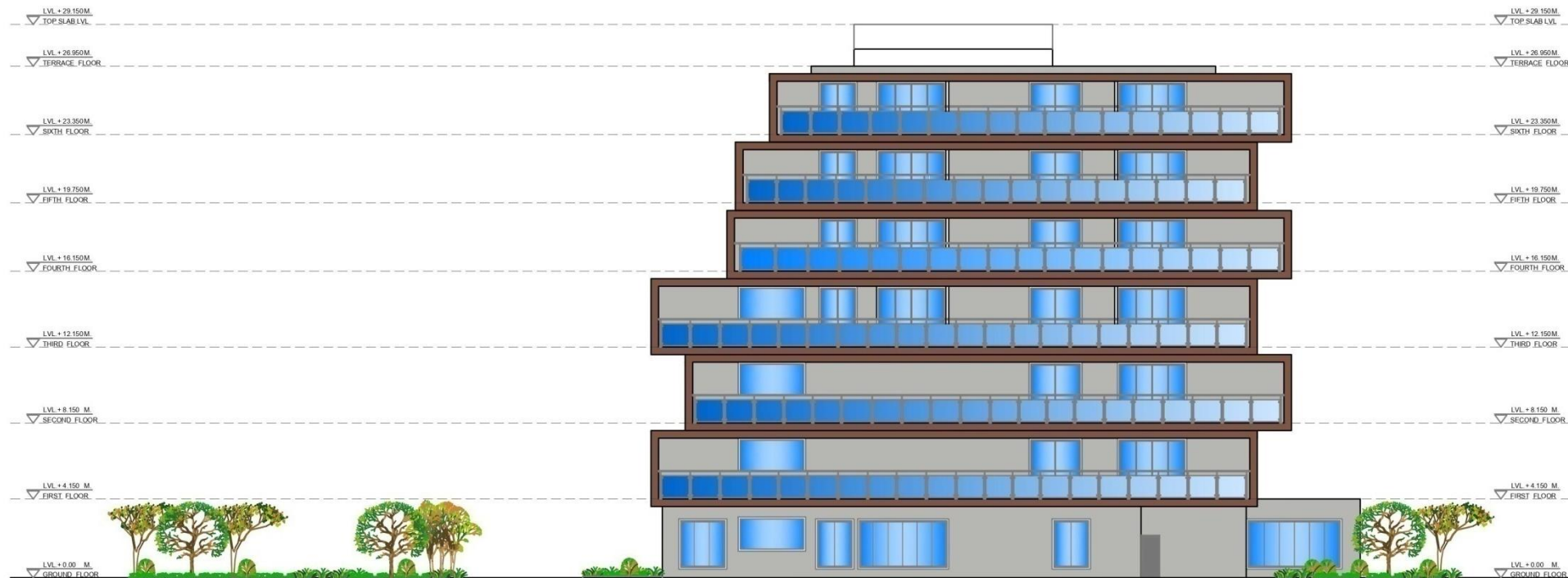


SECTION- A-A'





SECTION- B-B'

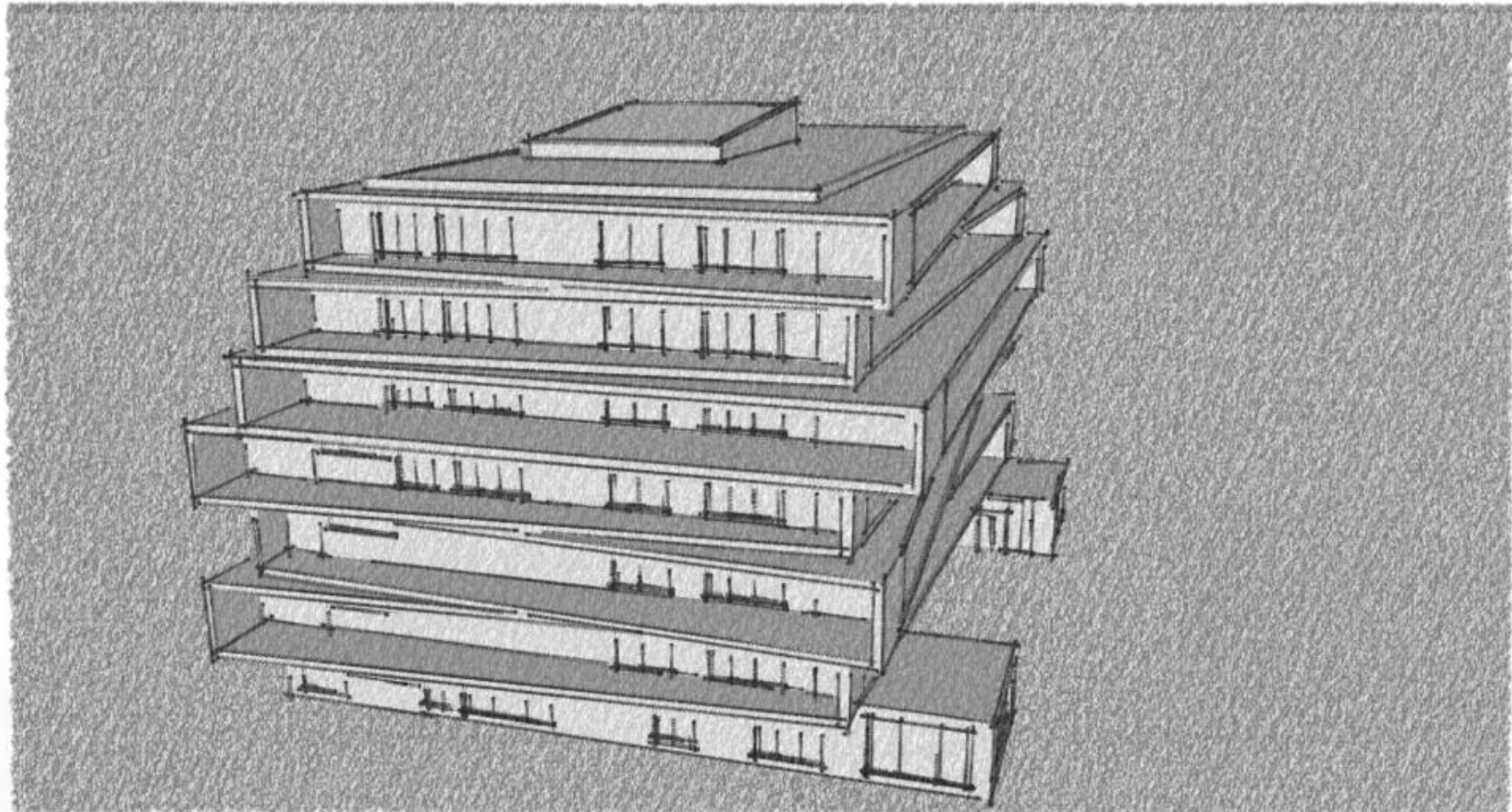
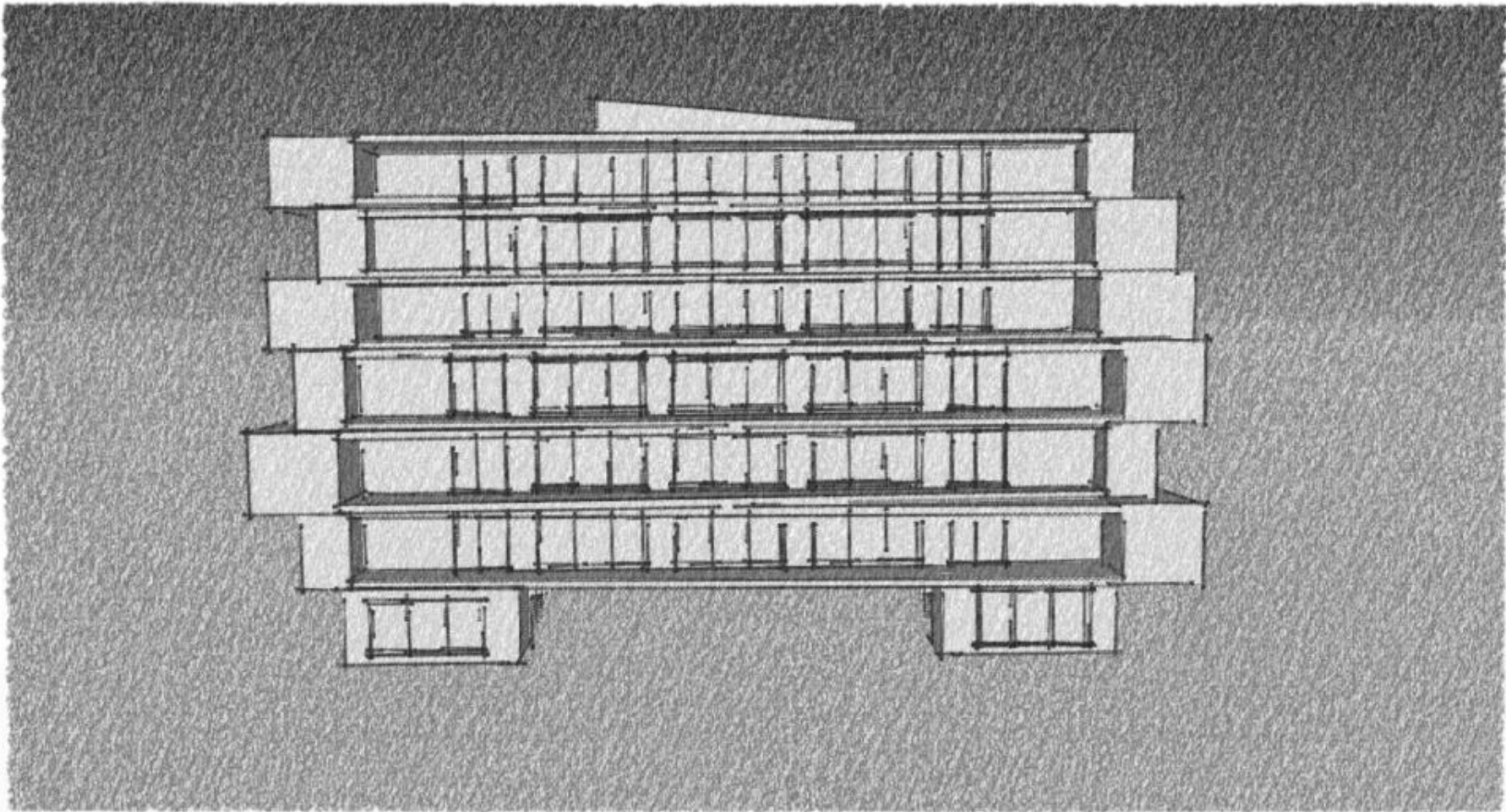


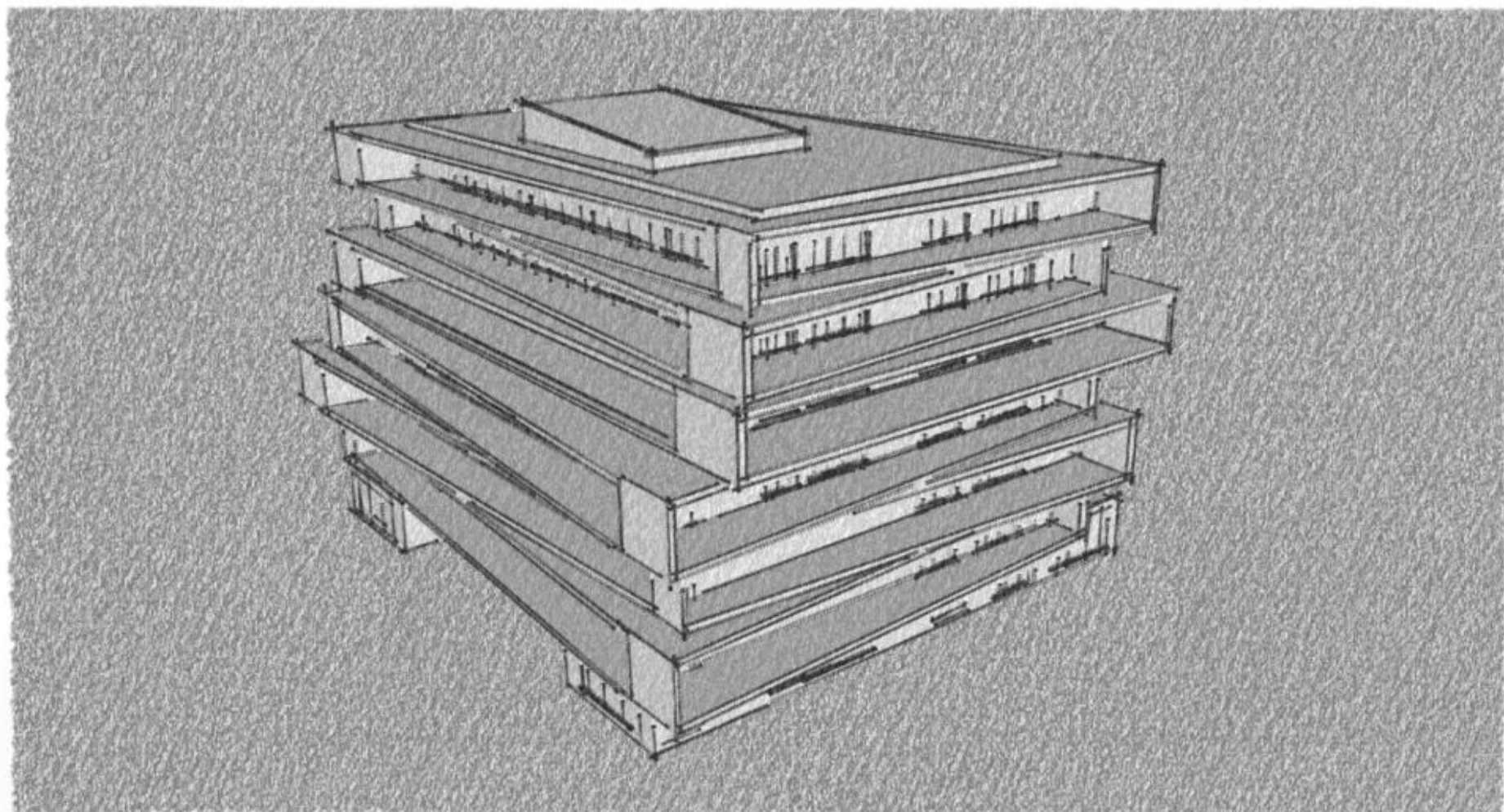
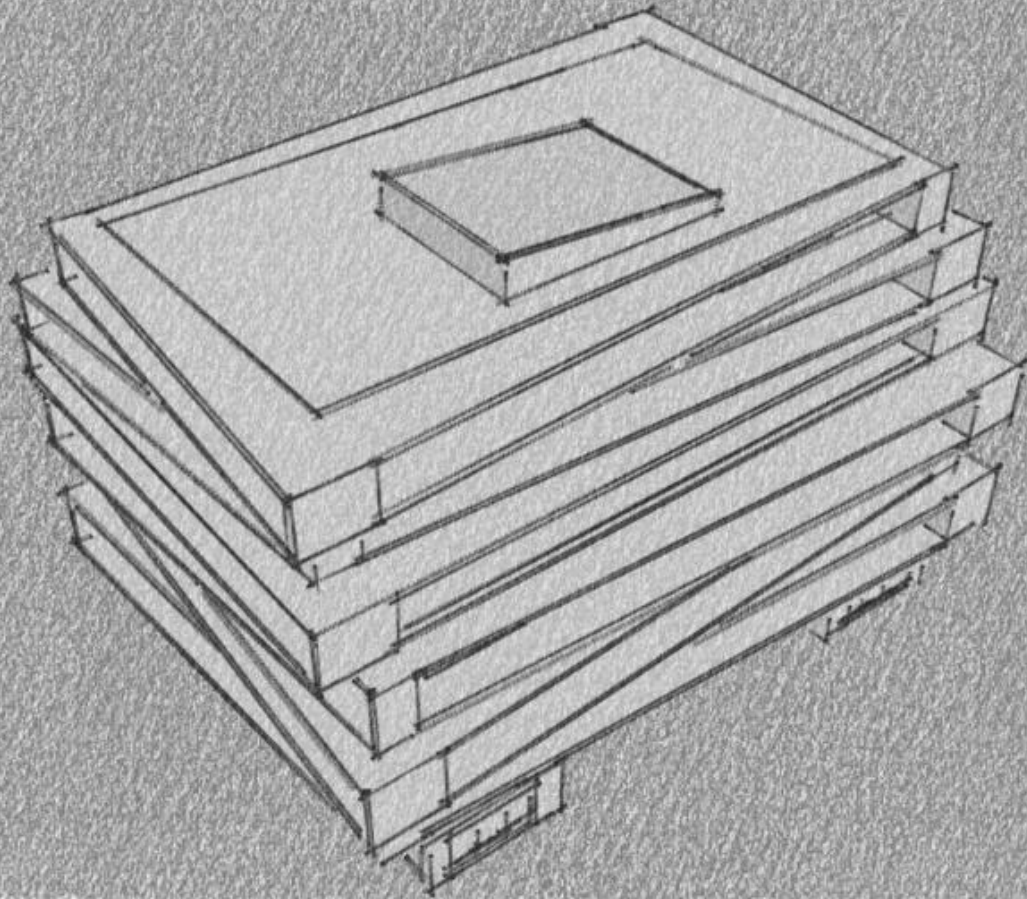
SOUTH-WEST VIEW



NORTH-EAST VIEW



















THANK YOU !